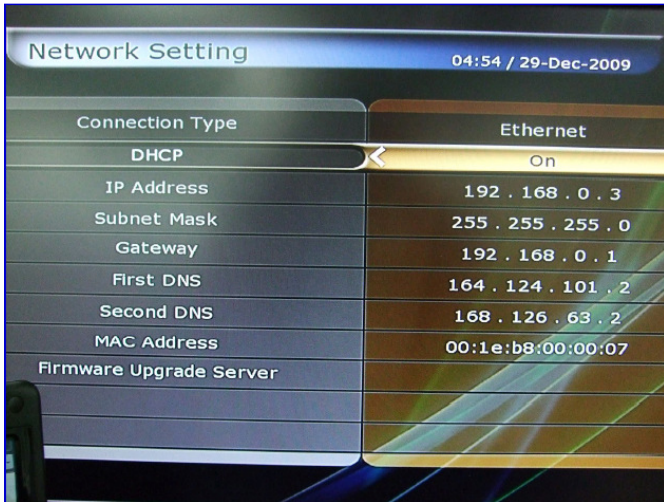


## <How to access your ICECRYPT S4000HDPVR from your PC >

Firstly please connect your ICECRYPT S4000HDPVR to your PC via a router.

Once this has been done please switch on your ICECRYPT S4000HDPVR and press menu on your remote control.



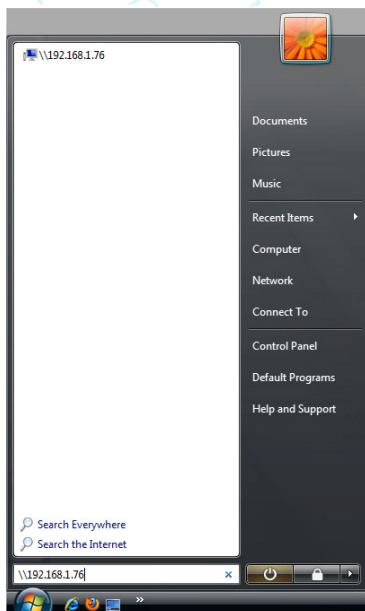
Then go to  
Menu > Installation > Network Setting > DHCP  
ON > OFF > ON

(here you will see your network information)

Please make a note of your IP address – As pictured above

*(IP address above is different from one used below the above is an older image being used again for ease)*

Once you have made a note of your IP address please go to your PC and click on your start button in the bottom left of your screen

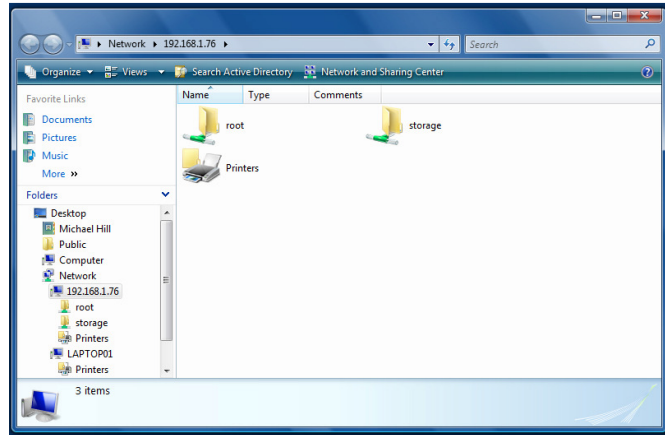


If you are using XP please go to the search box and type your IP address in this format [\\192.168.1.76](http://192.168.1.76)

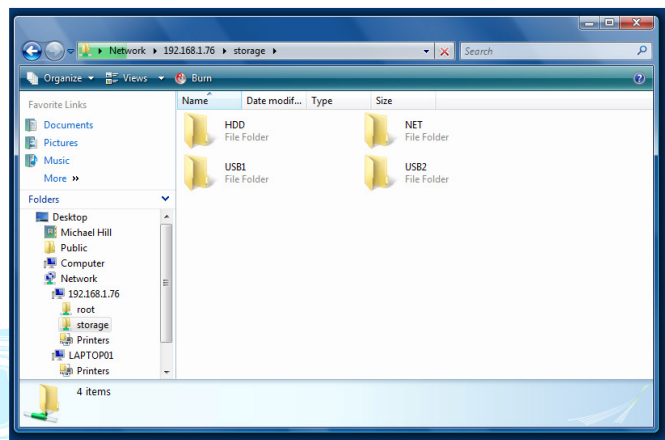
If you are using Vista (as pictured) / Windows 7 please just start typing your IP address in the same format as above [\\192.168.1.76](http://192.168.1.76)

Once you have typed this press your enter / return key

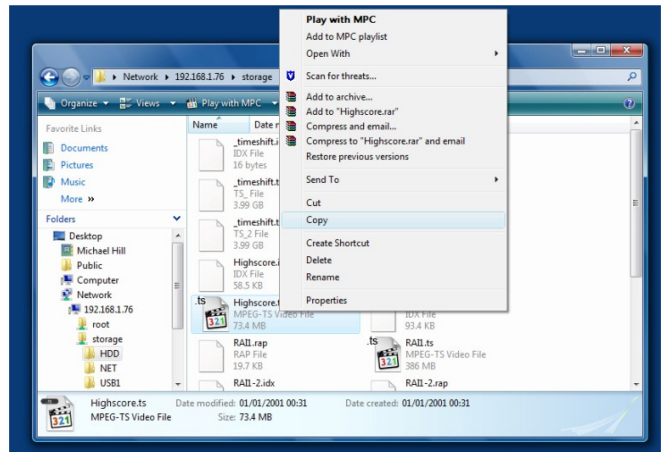
You will now be presented with the directories as pictured on the right.



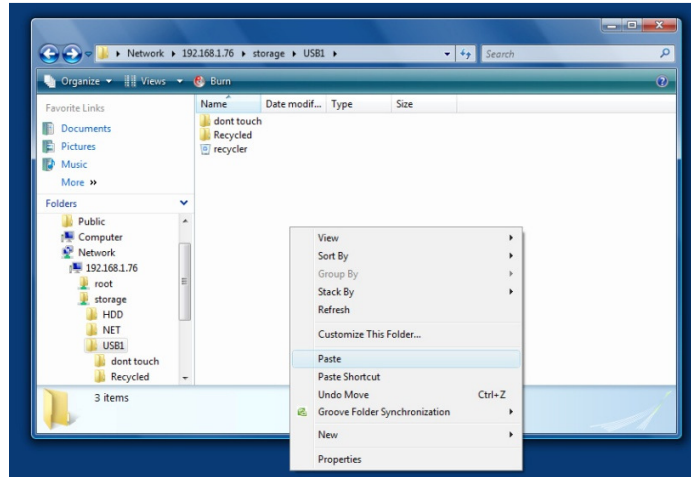
Please select the Storage directory to see your internal & external Hard Drives & USB devices and any other network storage devices that are connected to your ICECRYPT S4000HDPVR



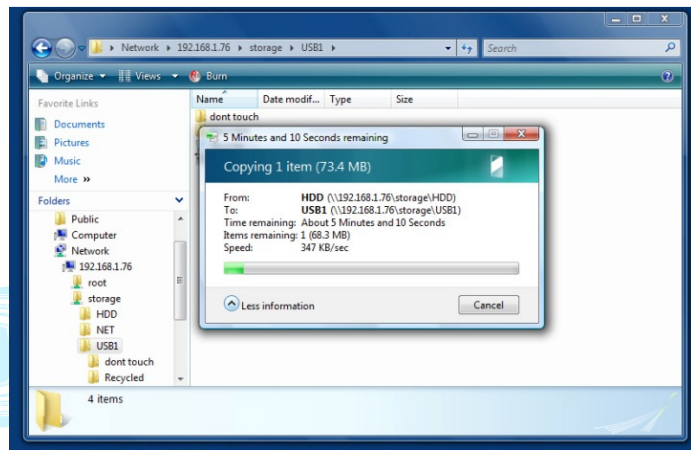
Select your HDD folder (for internal hard drive) and then right click on the file you want to move to your externally connected USB device and select copy



Then go back to your storage directory and select your USB device you want to copy to – in this case I am using USB1 – double click the USB1 folder to open it and then right click and select paste



This will copy the file you selected and the paste it in to the USB1 folder



You now have this file on your external USB device.

